



Pakistan Stone Development Company (PASDEC)
Ministry of Production, Government of Pakistan



PASDEC



Introduction

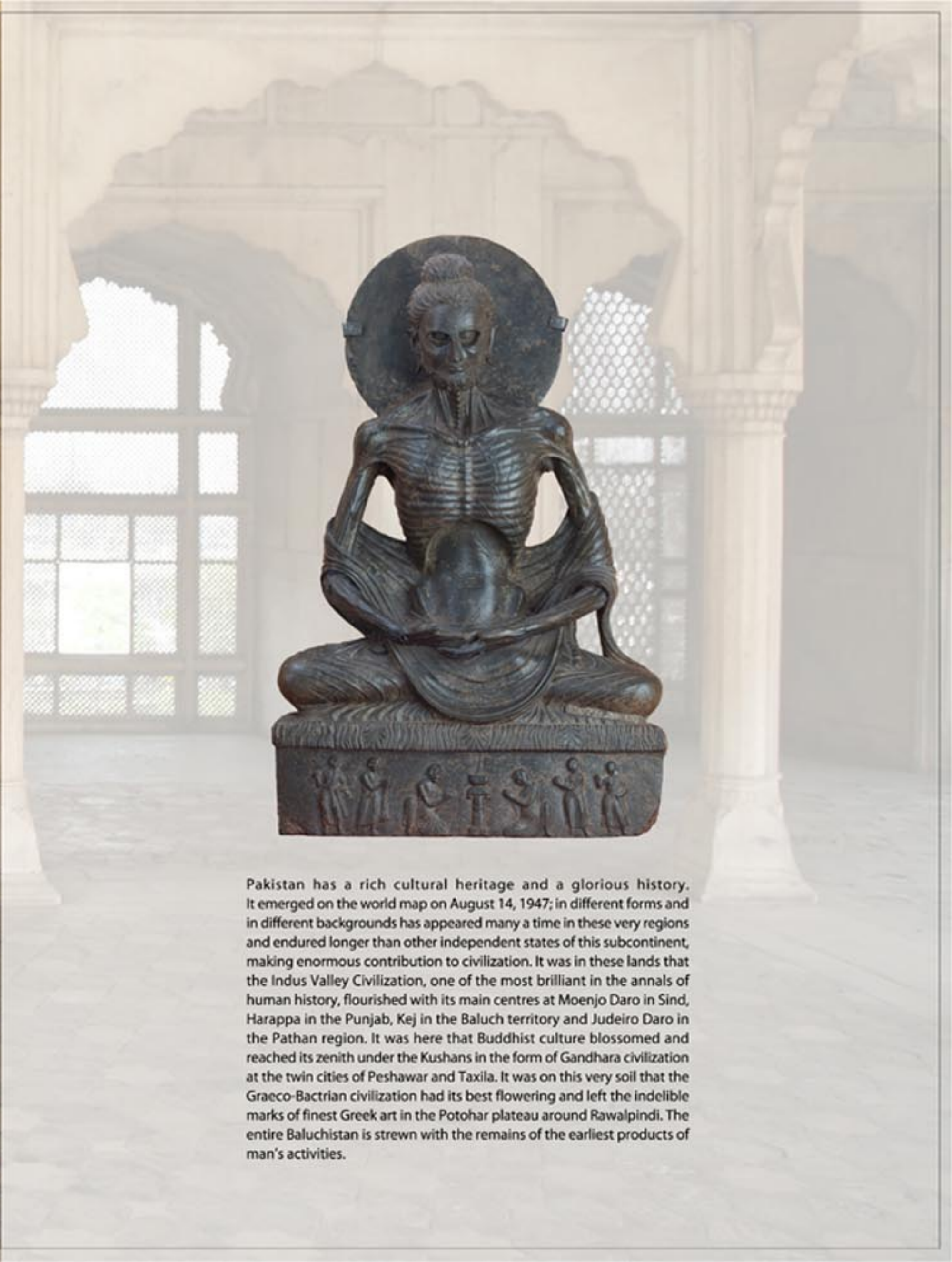


Pakistan Stone Development Company (PASDEC) is a not-for-profit organization, set-up in 2006 by the Government of Pakistan under Section 42 of the Companies Ordinance 1984, to develop the Marble and Granite (M&G) Sector of the country on modern technological lines. PASDEC is a subsidiary of Pakistan Industrial Development Corporation (PIDC) and is working under the administration control of Ministry of Production of the Federal Government.

Vision

To make Pakistan a Globally accepted competitive dimensional stone producing country by fully exploiting the natural resources through state of the art machinery and skilled workforce.

History and Heritage



Pakistan has a rich cultural heritage and a glorious history. It emerged on the world map on August 14, 1947; in different forms and in different backgrounds has appeared many a time in these very regions and endured longer than other independent states of this subcontinent, making enormous contribution to civilization. It was in these lands that the Indus Valley Civilization, one of the most brilliant in the annals of human history, flourished with its main centres at Moenjo Daro in Sind, Harappa in the Punjab, Kej in the Baluch territory and Judeiro Daro in the Pathan region. It was here that Buddhist culture blossomed and reached its zenith under the Kushans in the form of Gandhara civilization at the twin cities of Peshawar and Taxila. It was on this very soil that the Graeco-Bactrian civilization had its best flowering and left the indelible marks of finest Greek art in the Potohar plateau around Rawalpindi. The entire Baluchistan is strewn with the remains of the earliest products of man's activities.

Marble & Granite Sector of Pakistan



Pakistan has enormous reserves of marble and granite. Currently over 170 types of natural color marble are known to be mined, and initial estimates indicate 297 Billion tons of marble reserves across Pakistan. Nearly 1225 quarries and 2000 processors produced an estimated 100 million square feet of marble and granite, of which 97% was sold domestically earning a total of Rs. 1.7 billion. Exports were just 3% of total sales but earned Rs. 1.34billion, over 25 times the unit value of domestic sales.



The Marble and Granite industry in Pakistan was severely underdeveloped. At the Quarrying level, productivity was suffering from indiscriminate blasting, conservative quarrying methods and lack of infrastructure handling and transportation. At Processing level, the industry was suffering from low capacity utilization, lack of modern technology and limited value addition.

There was grave wastage at every step of the value chain. Although the industry was representing a small fraction of the GDP and less than 1% of exports, the potential to raise exports and foreign exchange, and deliver value to the rural areas was immense and significant. At that time, the United States Agency for international development (USAID) launched project: 'Pakistan Initiative for Strategic Development and Competitiveness'. The Project was implemented by J. E. Austin, a US management consulting company in partnership with Pakistan's Small and Medium Enterprise Development Authority (SMEDA). As part of the initiative, a group of committed industry stakeholders agreed to form a Strategy Working Group (SWOG) in order to ascertain a better way out through which the Marble & Granite Industry could be developed. SWOG developed a strategy, shared with, and agreed by, the private sector as well as the Government of Pakistan. The Strategy was focused on upgrading the entire value chain through the following initiatives:

Raise Value Chain Productivity

Improve Industry and Market Information

Strengthen Policies for increased productivity and competitiveness

Invest in Workforce Development, and

Strengthen industry, organizations, and support institutions

With the implementation of the Strategy, the SWOG expected that by the end of 2017, wastage in the Sector will reduce from the level of 85 percent to 45 percent, total revenue will increase from PKR 2.44 billion to 161.6 billion, and exports will be increase from USD 23 million to USD 2.44 billion.

PASDEC Conceived:

Few eminent stakeholders of the Marble & Granite sector conceived the idea of developing the sector (widely spread throughout the country) at large scale. They strived to provide a shape to their idea since early 90s. However, since the project they had thought to commence, involved huge finances beyond the reach of whole private sector. They, therefore sort the help of Government of Pakistan by giving valuable presentations to the Government echelons and it was 1999 that they successfully persuaded the Government for the large investment in the significantly productive Marble & Granite sector in order to get the desired fraction.

Once the initiatives were set forth against the objectives, there arose a need of a formal platform that could manage and implement the initiatives. Thus SWOG proposed establishment of an organization that could bring into its umbrella the whole sector and all the stakeholders quarrying and processing in the sector.

Thus the Pakistan Stone Development Company of Pakistan (PASDEC) was set up under Section 42 of the Companies Ordinance 1984. The first Board of Directors was constituted in June 2006 through a gazette notification of the Federal Government. PASDEC was made subsidiary of Pakistan Industrial Development Corporation (PIDC) and the administrative control was given to the Ministry of Production.

Board of Director (BOD) - the apex decision making body: The BOD PASDEC Comprises 12 members. Seven (7) members are from Private sector and Five (5) from Government Sector. Chairman of the Board is always from Private Sector as per Article of Association of PASDEC.



PASDEC is focused on achieving one goal, extraction of "square block". This strategy will trickle down effects tremendously throughout the value chain of the industry, achieving tremendous transformational impact. The development projects of PASDEC will provide employment opportunities to far-flung remote areas and increase income of incidences.

The Planning Commission of Pakistan has approved PC-I a sum of Rs. 1980 million for the development of Model Quarries (Projects to be established by PASDEC), Quarry Up-gradations (Existing projects operated by Private sector, to be developed by PASDEC through technical assistance & modern machinery), Machinery Pools, Common Facility and Training Centre (CFTC's) & Warehouses.

PASDEC was given mandate to develop the following:-

Model Quarry	10
Quarry Up-Gradation	20
Machinery Pools	02
Marble cities	07
Common Facility & training Centre (CFTC)	04
Warehouses	02
Stone Quarry Institutions in Pakistan	

PASDEC is moving ahead on fast track to achieve assigned target for development of Marble & Granite sector in Pakistan. PASDEC short term goal is develop Quarrying sector of Pakistan to reduce Quarrying wastage from 85% to 45%. So for PASDEC has done the following:

PROJECTS	STATUS
Model Quarry	
First Model Quarry Khuzdar	Operational
Second Model Quarry Chitral	Operational
Third Model Quarry Buner	Operational
Up-gradation	
Quarry Upgradation(Mastung-1)	Operational
Quarry Up gradation(Mastung-2)	Operational
Quarry Up gradation(Buner)	Operational
Quarry Up gradation(FATA)	Operational
Quarry Up gradation(Loralai)	Operational
Quarry Up gradation(Buner)	Operational
Marble Cities	
Risalpur(185 acres)	Infrastructure Work in Progress
FATA(300 acres)	Work in Progress
Loralai(50 acres)	Master Plan ready
Chitral	Land acquisition in process

PROJECTS	STATUS
Rental Up-gradations	
Rental Up-gradation(Mastung-1)	Operational
Rental Up-gradation(Mastung-2)	Operational
Rental Up-gradation(Khuzdar)	Operational
Rental Up-gradation(Lasbella)	Operational
Rental Up-gradation(Chaghi)	Operational
Machinery Pool	
Machinery Pool(Risalpur)	Operational
Machinery Pool(Gaddani)	Operational
Machinery Pool(FATA)	Operational
CFTC	
CFTC Risalpur	Master Plan Ready
CFTC Gaddani	Master Plan Ready
CFTC FATA	Master Plan Ready
Warehouses	
Warehouses at Gaddani	Operational
Warehouses at Risalpur	Operational
Mosaic Training	
Total Trainees (230 Females & 60 Males)	290
Quarry Operators Trainings	
Quarry Operators Training	450

PASDEC Projects



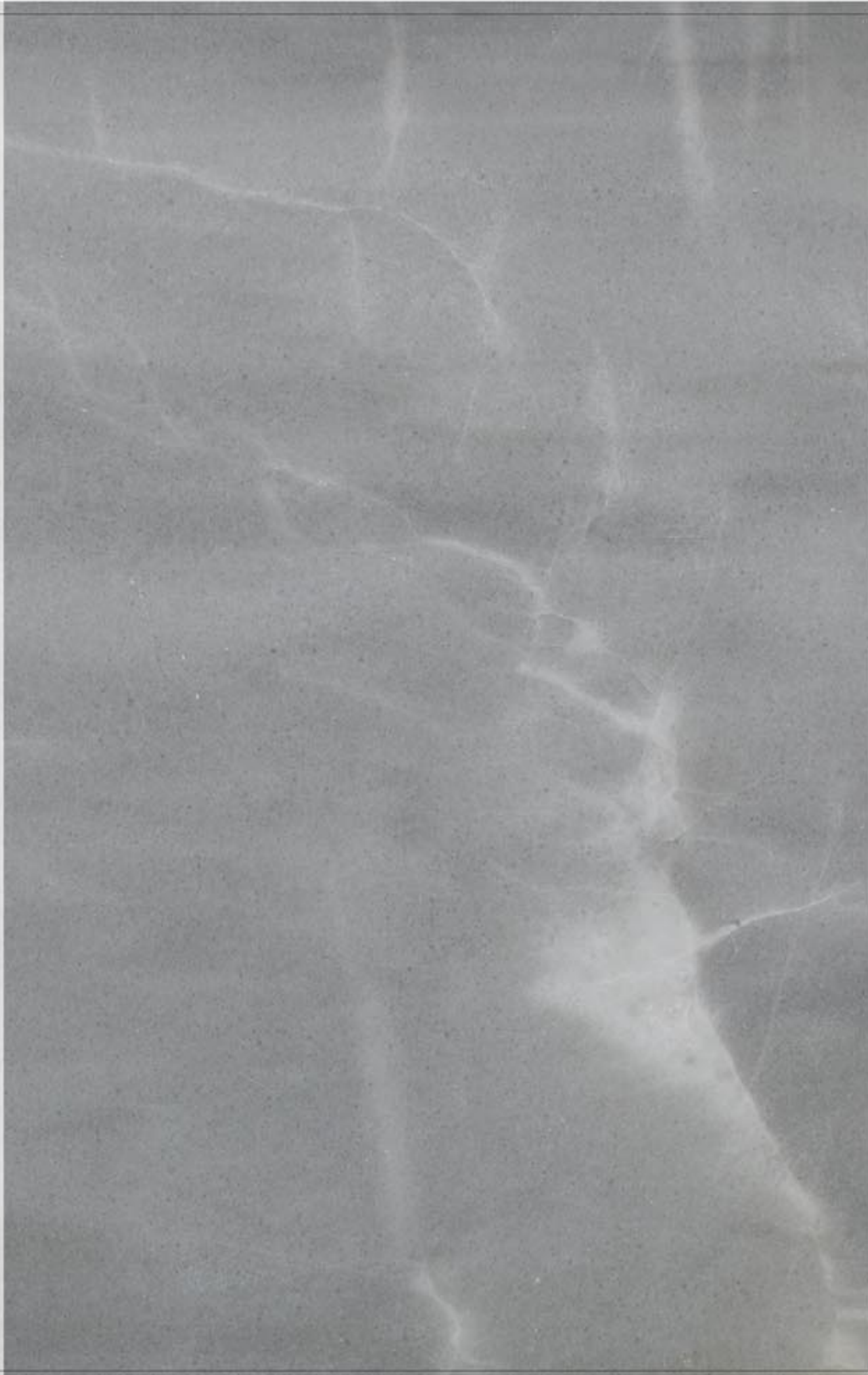
Project Name	Monthly (Average) in Tons	Total Available at Site (Tons)	Total Available at Warehouse (Tons)	Total Estimated Reserves (Million Tons)
Kunal Beige	1000	7053	2270	15.35
Carrara White	400	2452	559	12.15
Dark Beige	250	1559	166	359.37
Light Beige	150	945	547	35.07
Chitral White	150	1138	80	15
FATA White	150	452	Nil	1.46
Loralai White	150	700	Nil	0.46

Kunal Beige



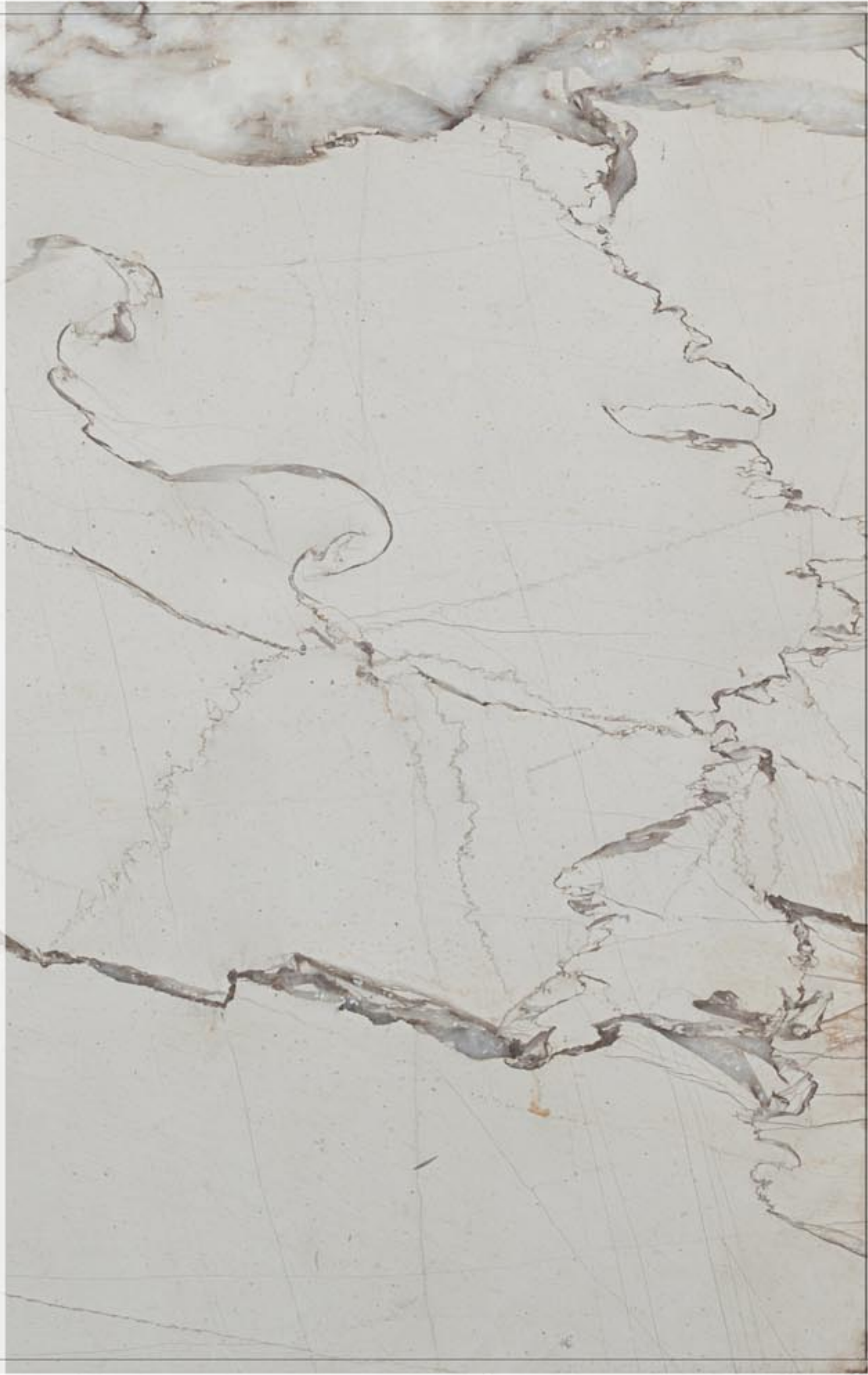
M/S SHASHAN MARBLE COMPANY		
Brand Name: Kunal Sher Chahi		
Laboratory Test	MINERALOGICAL COMPOSITION (%)	
	Calcite	10
	Carbonate	85
	Ore Minerals	1
	Clayey & Silicate Material	4
	CHEMICAL ANALYSIS (WEIGHT %)(ASTM C-25)	
	CaO	53.7
	MgO	1.3
	L.O.I	42.93
	PHYSICAL AND MECHANICAL PROPERTIES	
	Specific Gravity	2.69
	Water Absorption (%) (ASTM-97)	0.092

Chitral Grey



M/S Abdul Jalil Mining COMPANY		
Brand Name: Wariez Speen		
Laboratory Test	MINERALOGICAL COMPOSITION (%)	
	Calcite	78
	Carbonate	20
	Ore Minerals	Tr
	Quartz	Tr
	Clayey & silicate material	2
	CHEMICAL ANALYSIS (WEIGHT %)(ASTM C-25)	
	CaO	s
	MgO	0.96
	L.O.I	39
	PHYSICAL AND MECHANICAL PROPERTIES	
	Specific Gravity	2.68
	Water Absorption (%) (ASTM-97)	0.137

Loralai White



M/S Bagh-u-Din Marble Mines Brand Name: Loralai White		
Laboratory Test	MINERALOGICAL COMPOSITION (%)	
	Calcite	4
	Carbonate	90
	Ore Minerals	2
	Quartz	Tr
	Clayey & silicate material	5
	CHEMICAL ANALYSIS (WEIGHT %)(ASTM C-25)	
	CaO	51.6
	MgO	0.96
	LOI	41.0
	PHYSICAL AND MECHANICAL PROPERTIES	
	Specific Gravity (ASTM-97)	2.48
Water Absorption (%) (ASTM-97)	1.053	

Dark Beige



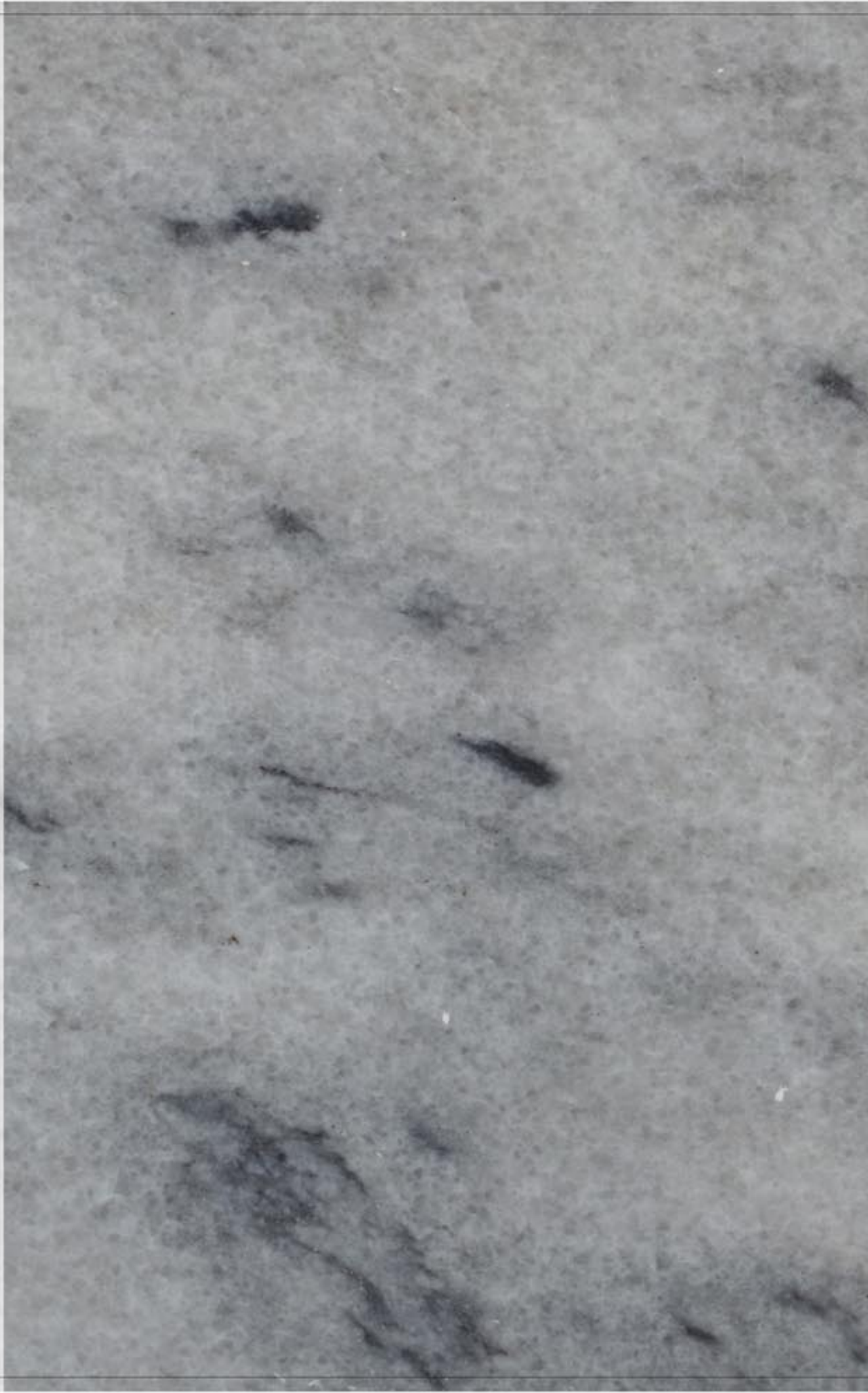
M/S AZIZ BROTHERS Brand Name: Kumbela Sheer Chahi		
Laboratory Test	MINERALOGICAL COMPOSITION (%)	
	Calcite	20
	Carbonate	76
	Clayey & Silicate Material	4
	CHEMICAL ANALYSIS (WEIGHT %)(ASTM C-25)	
	CaO	41.4
	MgO	3.38
	LOI	41.8
	PHYSICAL AND MECHANICAL PROPERTIES	
	Specific Gravity	2.68
	Water Absorption (%) (ASTM-97)	0.138

Light Beige



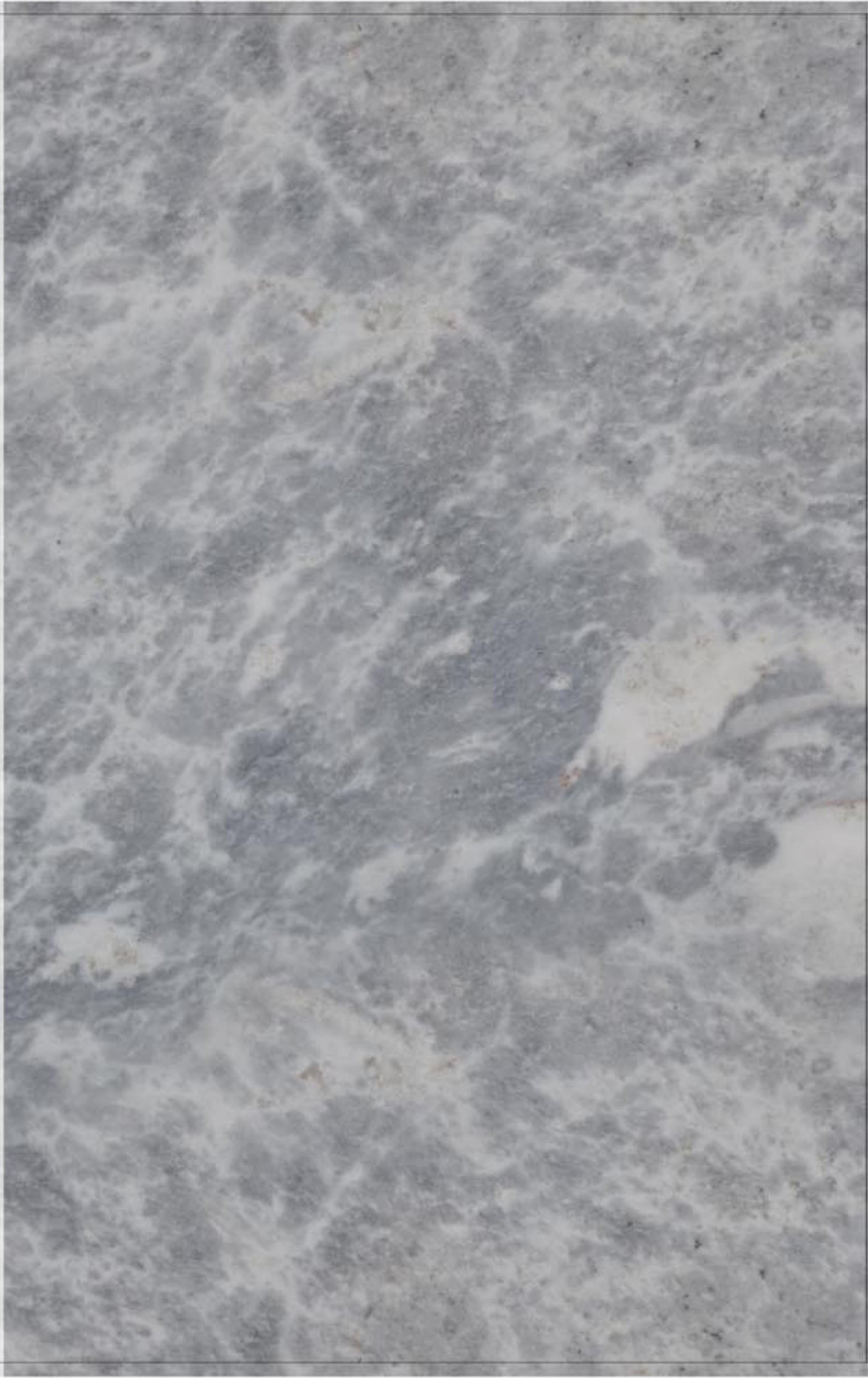
M/S SALEHEEN MINING COMPANY		
Brand Name: Kumbela		
Laboratory Test	MINERALOGICAL COMPOSITION (%)	
	Calcite	18
	Carbonate	96
	Ore Minerals	Tr
	CHEMICAL ANALYSIS (A8IGHT NERASTM C-25)	
	CaO	46.2
	MgO	0.95
	LOI	41.6
	PHYSICAL AND MECHANICAL PROPERTIES	
	Specific Gravity	2.89
Water Absorption (%) (ASTM-87)	0.115	

Sunny Grey



M/S BAMPOKHA MINING COMPANY		
Brand Name: Spogmay Stori		
Laboratory Test	MINERALOGICAL COMPOSITION (%)	
	Calcite	20
	Carbonate	75
	Ore Minerals	5
	Clayey & silicate material	Tr
	CHEMICAL ANALYSIS (WEIGHT %)(ASTM C-25)	
	CaO	29
	MgO	15.3
	LOI	46
	PHYSICAL AND MECHANICAL PROPERTIES	
	Specific Gravity	2.83
	Water Absorption (%) (ASTM-97)	0.295

Carrara



M/S JAVED MINING COMPANY Brand Name: Spogmay Stori		
Laboratory Test	MINERALOGICAL COMPOSITION (%)	
	Calcite	20
	Carbonate	75
	Ore Minerals	5
	Clayey & silicate material	Tr
	CHEMICAL ANALYSIS (WEIGHT %)(ASTM C-25)	
	CaO	29
	MgO	15.3
	L.O.I	46
	PHYSICAL AND MECHANICAL PROPERTIES	
	Specific Gravity	2.83
	Water Absorption (%) (ASTM-97)	0.295

Mohmond White



M/S UNIVERSAL MINING COMPANY Brand Name: Spogmay Speen		
Laboratory Test	MINERALOGICAL COMPOSITION (%)	
	Calcite	91
	Carbonate	9
	Ore Minerals	Tr
	CHEMICAL ANALYSIS (WEIGHT %)(ASTM C-25)	
	CaO	53
	MgO	0.64
	L.O.I	42
	PHYSICAL AND MECHANICAL PROPERTIES	
	Specific Gravity	2.7
	Water Absorption (%) (ASTM-97)	0.157

Camel Granite



Pakistan Stone development company		
Brand Name : Camel Granite		
Laboratory Test	MINERALOGICAL COMPOSITION (%)	
	Quartz	30
	Feldspar	20
	Plagioclase	20
	Orthoclase	15
	Biotite	6
	Amphibole	4
	Ore Minerals	5
	CHEMICAL ANALYSIS (WEIGHT %)(ASTM C-25)	
	CaO	1.9
	MgO	3.3
	L.O.I	0.4
	SiO ₂	86.0
	Fe ₂ O ₃	0.5
	Al ₂ O ₃	0.8
PHYSICAL AND MECHANICAL PROPERTIES		
Specific Gravity	2.69	
Water Absorption (%)	0.1912	



360 degree view of Marble city Raisalpur



Master Plan of Marble City Raisalpur



Master Plan of Marble City Mohmand



Master Plan of Marble City Loralai



Machinery Pool Raisalpur



Warehouse Gaddani



Warehouse Gaddani



For the first time in the history of Pakistan, Marble Mosaic Training Programs were initiated for females to encourage them to participate in marble sector. In past Marble industry being one of the largest industries was ignored in the field of Skill development. PASDEC arranged number of Skill Development Training sessions throughout the country including Marble Mosaic, Handicrafts & Masonry Trainings other than Machinery & Model Quarry Development trainings.

PASDEC has launched nationwide "Mosaics Training Program" to promote entrepreneurship culture through self-employment. The training workshop offers short technical Mosaic courses, followed by business counselling to those interested in starting their own business.

Objectives of Marble Mosaic & Inlay Training Programs:

The PASDEC Mosaic Projects focuses on Training of Trainers & women's empowerment through capacity building with regards to skill and enterprise development. In the training the key aim is to build the capacity of women belonging to the most marginalized and poverty stricken strata of society by creating and increasing their awareness through training and skill development so as to enable them to become successful entrepreneurs and provide them the opportunity to earn on regular basis and be able to train in their relevant institutes. The linkages developed with the Investors / Marbles Processing Factory owners helped the cluster to sustain after the completion of project.

- Be qualified to deliver enterprise development training to existing and potential entrepreneurs in enterprise development.
- Become certified skill trainers in to work with PASDEC and other stake holders to deliver enterprise development and technical training to existing and new women entrepreneurs.
- Have privileged access to state-of-the-art training facilities established by PASDEC and in order to disseminate technical training.
- Develop a range of products in both marble mosaics for both local and international markets. Trainers will have the opportunity to establish themselves as entrepreneurs in either of these two creative industries.
- Have the opportunity to work both nationally and internationally as consultants/experts in the field of marble mosaic and Inlay.
- Creation of value added products from waste of marble industry.
- Exchange of knowledge and transfer of the technology.
- Maximizing profits of the marble industry through diversification of the finished product.
- Capacity building and skill development in the art of mosaic and Inlay.
- Promoting entrepreneurial culture in the country.
- Empowerment of women towards economic self sufficiency. Providing respectable earning & living to female gender in the society.



Government of Pakistan



Pakistan Stone Development Company

Ministry of Production, Government of Pakistan

2nd Floor, Islamabad Chamber of Commerce & Industry Building

Mauve Area, G-8/1, Islamabad

Tel: 0092-51-9263465-7

Fax: 0092-51-9263464

Email: info@pasdec.com.pk

Web: www.pasdec.com.pk